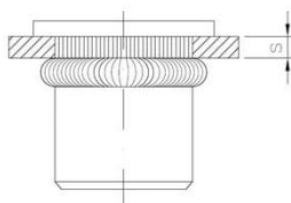
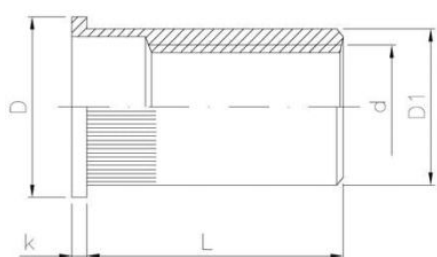


Pinnoite tyyppi:



Dimensions

Material index	d	L [mm]	D [mm]	k [mm]	D1 [mm]	s [mm]
2502100220STT	M10	22.0	17.0	1.7	12.9	4.0-6.0
2502080195STT	M8	19.5	14.6	1.5	10.9	3.5-6.0
2502060185STT	M6	18.5	12.3	1.3	8.9	3.0-5.5
2502050155STT	M5	15.5	10.0	1.0	6.9	2.5-5.0
2502040110STT	M4	11.0	9.0	0.8	5.9	2.0-3.5
2502100200STT	M10	20.0	17.0	1.7	12.9	1.0-4.0
2502080170STT	M8	17.0	14.5	1.5	10.9	1.0-3.5
2502060140STT	M6	14.0	12.3	1.3	8.9	0.5-3.0
2502050120STT	M5	12.0	10.0	1.0	6.9	0.5-2.5
2502040100STT	M4	10.0	9.0	0.8	5.9	0.5-2.0