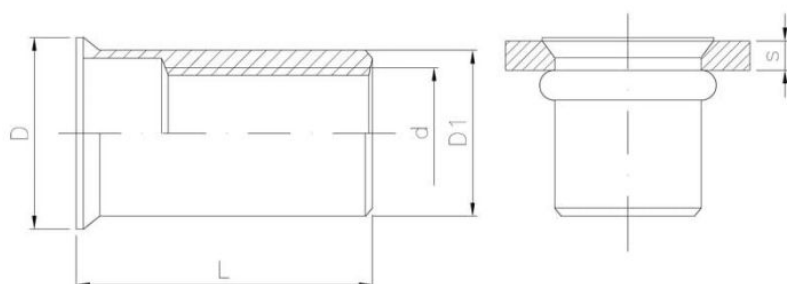


Pinnoite tyyppi:

POWŁOKA
CYNKOWA
BIAŁA

Dimensions

Material index	d	L [mm]	D [mm]	k [mm]	D1 [mm]	s [mm]
2504080165STT	M8	16.0	12.0	0.65	10.9	0.5-3.0
2504060140STT	M6	14.0	10.5	0.60	8.9	0.5-2.5
2504050115STT	M5	11.5	8.0	0.50	6.9	0.5-2.0
2504040105STT	M4	10.5	7.0	0.50	5.9	0.5-2.0