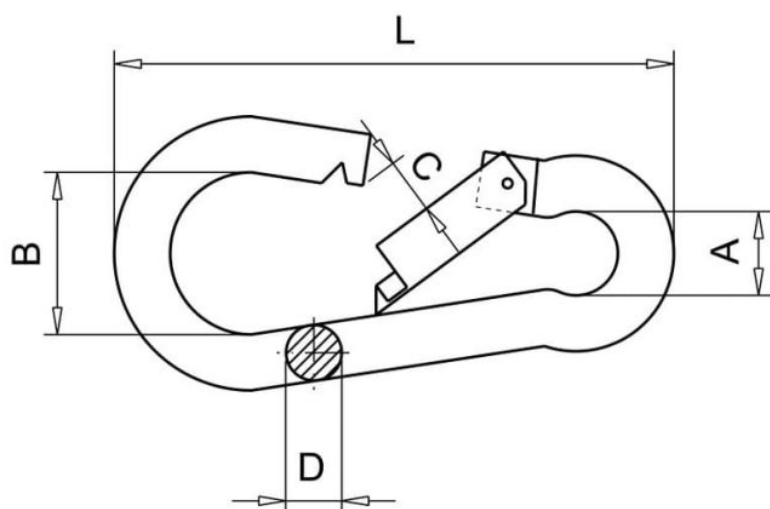


Pinnoite tyyppi:



Dimensions

Material index	Tyyppi	A [mm]	B [mm]	C [mm]	D [mm]	L [mm]	Kuormitettavuus [kg]	Murtolujuus [kg]
6323100100S	10x100	14.5	29	11	9.4	100	350	700
6323090090S	9x90	12.0	24	11	8.4	90	250	500
6323080080S	8x80	11.5	23	10	7.4	80	230	460
6323070070S	7x70	10.0	19	9	6.7	70	180	360
6323060060S	6x60	8.5	17	8	5.5	60	120	240
6323050050S	5x50	7.5	15	5.5	4.8	50	100	200
6323040040S	4x40	6.0	11.7	4.5	3.9	40	70	140
6323140180S	14x180	24.0	60	28	13.6	180	580	1160
6323130160S	13x160	21.0	54	26	12.6	160	530	1060
6323120140S	12x140	20.0	40	22	11.5	140	450	900
6323110120S	11x120	17.5	36	17	10.7	120	400	800